

MARU

Interiors & Houses, Lifestyle

FOCUS

The House in the Woods

Urban Contemporary Housing

SPACE IN THE SPACE
KOALA House, U-HAUS

DESIGNERS

Vinero Winery and Hotel
LA PARISIENNE HEADQUARTER
Kim Jongwoo ATP Academy
Cafe, El Moro, Little Oscar, N3ON

vol.170





Malvern House

Jost Architects

디자인 조스트 아키텍츠 실내디자인 조스트 아키텍츠 시공 비커스 워치 호주 빅토리아주 말번 사진 프레이저 마스덴

Architect Jost Architects Interior Jost Architects Construction Bacchus Construction Location Malvern, Victoria, Australia
Photo Fraser Marsden



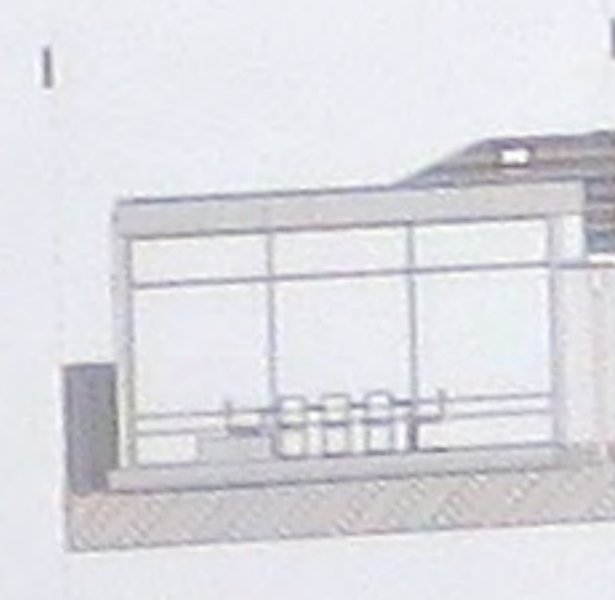
North Elevation



South Elevation



West Elevation



East Elevation



열린 하우스

내부 마감은 설계에 사용된 지재의 개별적인 텍스처와 연관지어 선택했다. 세세한 디테일은 신중하게 선택되었고 깔끔하게 디자인되었지만, 예산 내에서 조절될 수 있도록 신경 썼다. 디테일은 고객에게도 매우 중요한 부분이었다. 특히 고객들 중 한 명이 특히 이 프로젝트의 모든 측면을 검토하고 이해하는데 매우 정확성을 가지고 있었으며 철저했다. 그는 디테일에 굉장한 집중력이 필요했던 과거 커리어 덕분에 이런 정확하고 철저한 특징을 갖게 되었다고 했는데, 그 덕분에 이 프로젝트를 진행한 모든 사람들이 긴장을 놓지 않고 진행할 수 있었다.

가공 목재 마루, 열성 변형 처리된 목재 피복, 순환수식 난방 영역의 이용 및 이중 유리 된 스틸 유리창 및 슬라이딩 도어와 같은 내구성 있는 재료가 지속 가능한 시설에 포함되었다. 또한, 건축적 설계와 함께 목재를 선호하는 구조가 조화를 이루고 있고, 열 측면에서 지속가능한 훌륭한 설계를 합리적으로 적용함으로써 편안한 생활을 제공할 수 있도록 했다. ■

The project involved a small, inter-war semi-detached house which despite the local council's Heritage B grading, appeared to have very few significant features or attributes. From the outset, this posed challenges to achieving the client's enthusiastic brief.

The 1980's alteration and addition, were removed and the new 2015 version was introduced. The plan is traditional with rooms accessible from a central corridor leading into the rear dining and living area where the ceiling rakes up to a substantial height. This creates an impressive space in an otherwise modestly sized area complimented by highlight windows providing controlled northern sunlight. The double stacking, full-height doors connect the space to the spotted gum deck and dense, established perimeter landscaping.

The interior finishes draw on the individual textures of the materials employed. The detail is careful and clean but controlled to sit within the budget. The detailing was also very important to the clients, but one of them in particular was very precise and thorough in reviewing and understanding every aspect of the project, an attribute he had acquired from a previous career that required enormous attention to detail. This kept everyone involved on their toes! Sustainable applications included long-lasting and durable materials such as engineered timber flooring, thermally modified timber cladding, the use of zoned hydronic heating and double glazed steel windows and sliding doors. Also, the co-ordination of architectural design and structure favouring timber but at the end of the day, in terms of sustainability, the sensible application of good thermally passive design provides for comfortable living.

