

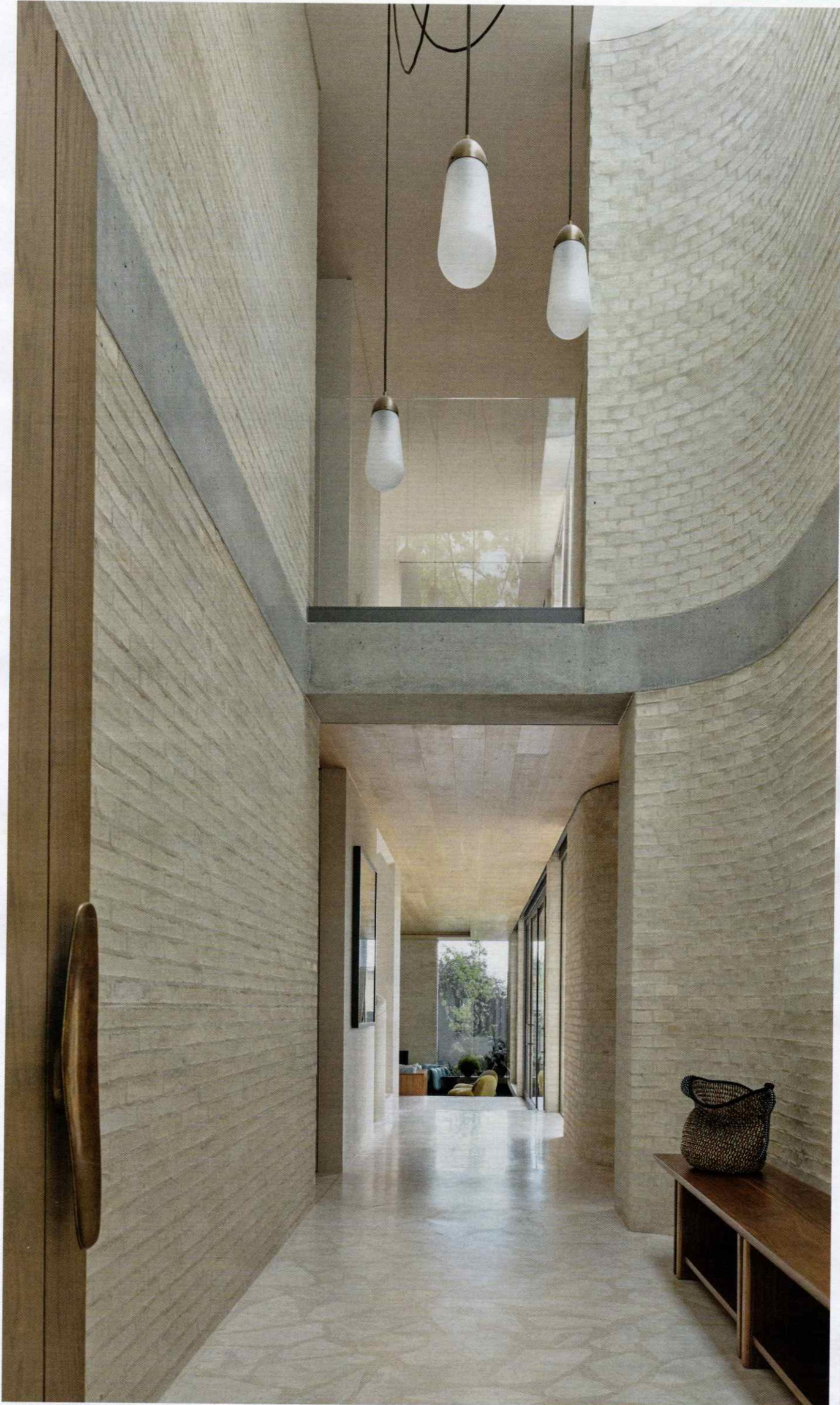
Domain
PRESTIGE

THE BEST IN AUSTRALIAN PROPERTY



SWEET ESCAPE

An inner-city oasis



COURTESY OF JONES



A textural triumph in Melbourne's leafy suburbs

In Melbourne's Malvern, Studio Tate has designed a family home as a delicious cocktail of playfulness, texture, and indulgence that'll make you want to move in faster than you can say "interior design goals".

Returning to Melbourne after a stint in Perth, the clients approached the studio with a clear vision: a comfortable family home that would foster togetherness.

"It was important for the home to adapt to the family's changing needs, that it felt warm and textural and that each space was considered for its functionality first," says Studio Tate associate director Liz Ride.

Working closely with architects Lovell Burton, the studio rationalised the home's L-shaped layout to embrace a courtyard, pool and tiered garden designed in collaboration with Amanda Oliver Gardens. The clever spatial arrangement maximises the connection between indoor and outdoor spaces.

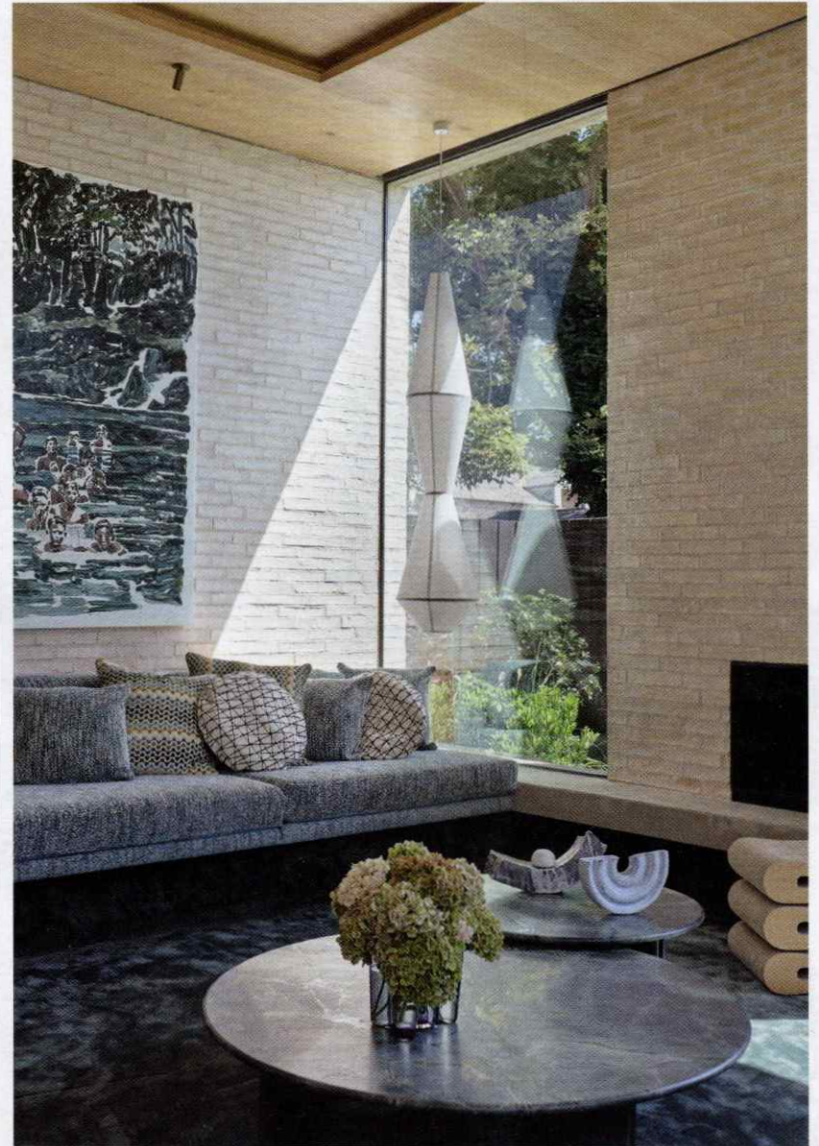
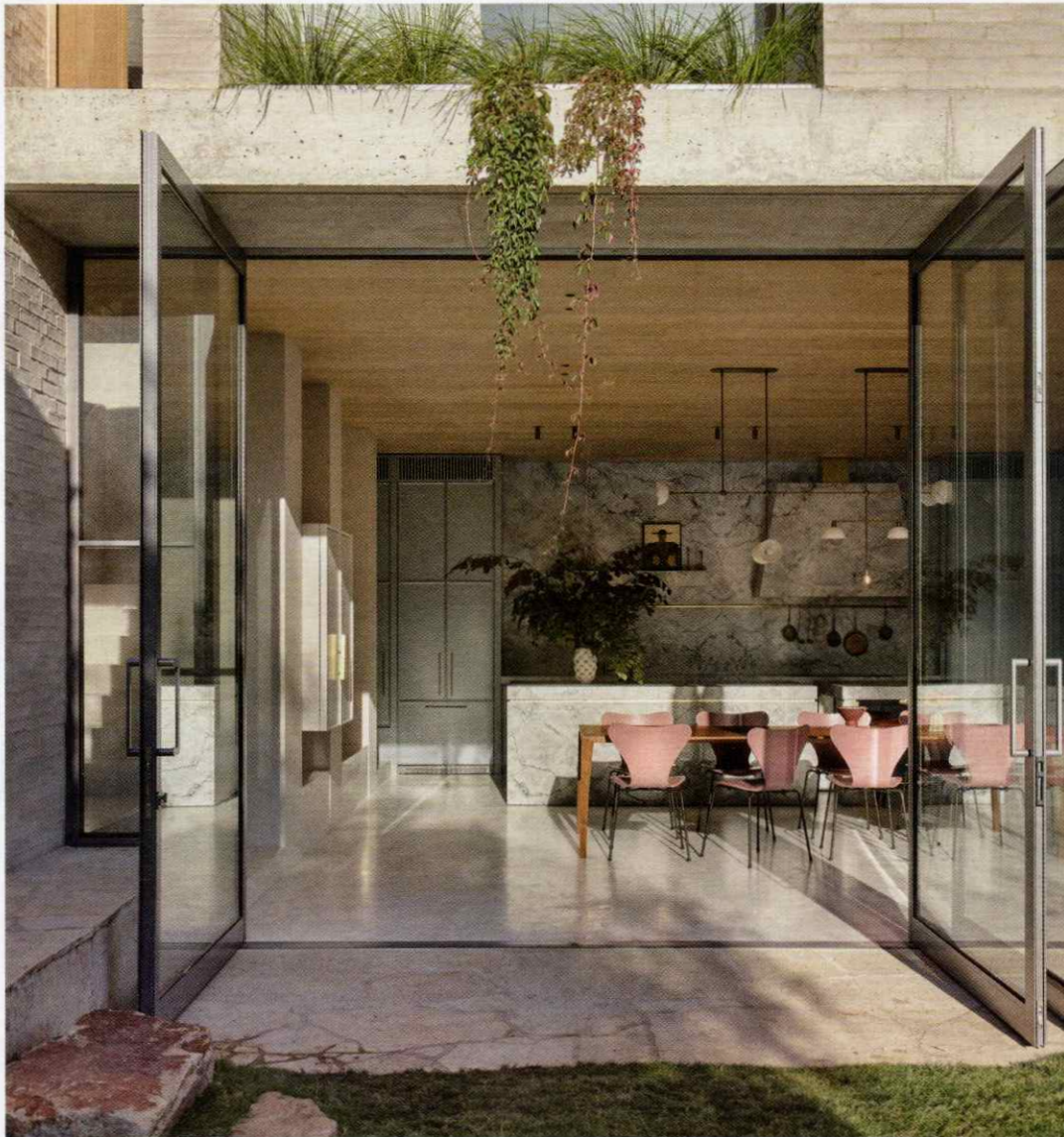
Studio Tate embraced the Japanese philosophy of wabi-sabi, which is all about celebrating the beauty in imperfection and patina via tactile finishes and hand-crafted elements that whisper, "I'm one of a kind, baby."

The design team's signature use of vibrant colour accents brings spaces to life. These hues, ranging from deep green to powder blue, dusty pink to fresh mint, create distinct atmospheres while maintaining a sense of cohesion.

On entry, visitors are greeted by a dramatic double-height void and skylight that hits like a refreshing splash of champagne, setting the tone for the light-filled spaces beyond. The ground floor unfolds in a series of terraced planes that follow the natural descent of the site.

The kitchen is a vibrant family hub featuring warm Palladiana floors, veined marble, powder blue cabinetry and brass accents.

A hidden bar, lined with Yves Klein blue cabinetry and a rippled gold mirror, caters to the family's love of entertaining.



At the rear of the home, a sunken lounge space creates what Ride describes as “a deep green bowl”, anchored by a central exposed brick fireplace and surrounded by garden views.

Excuse me while I faint from the fabulousness.


The bedrooms upstairs are like tree-houses for grown-ups, with views of the leafy canopy.

A vibrant “cosy corner” combines banquette seating with hidden toy storage and shelving, creating a perfect spot for the children to read and play together.

“The scale of the kids’ bedrooms and shared zone is future-proofed to accommodate study desks as their needs change over time,” Ride says, highlighting the home’s adaptability.

Custom joinery, intricate stonework and bespoke furniture showcase the skill of local artisans. These elements, along with decorative lighting and hand-crafted finishes, elevate everyday living with a sense of occasion.

“Glamorous moments are inserted among a warm, textural background to strike a fine balance between homely and luxurious,” Ride says. It’s like wearing your comfiest PJs while dripping in diamonds.

Malvern Residence III weaves together poetry and purpose, proving that being family-friendly doesn’t have to mean being design-challenged. It’s the kind of place where memories are made, laughter echoes off perfectly designed walls, and every day feels like a magazine spread. 

“It was important for the home to adapt to the family’s changing needs ... and that each space was considered for its functionality first.”

